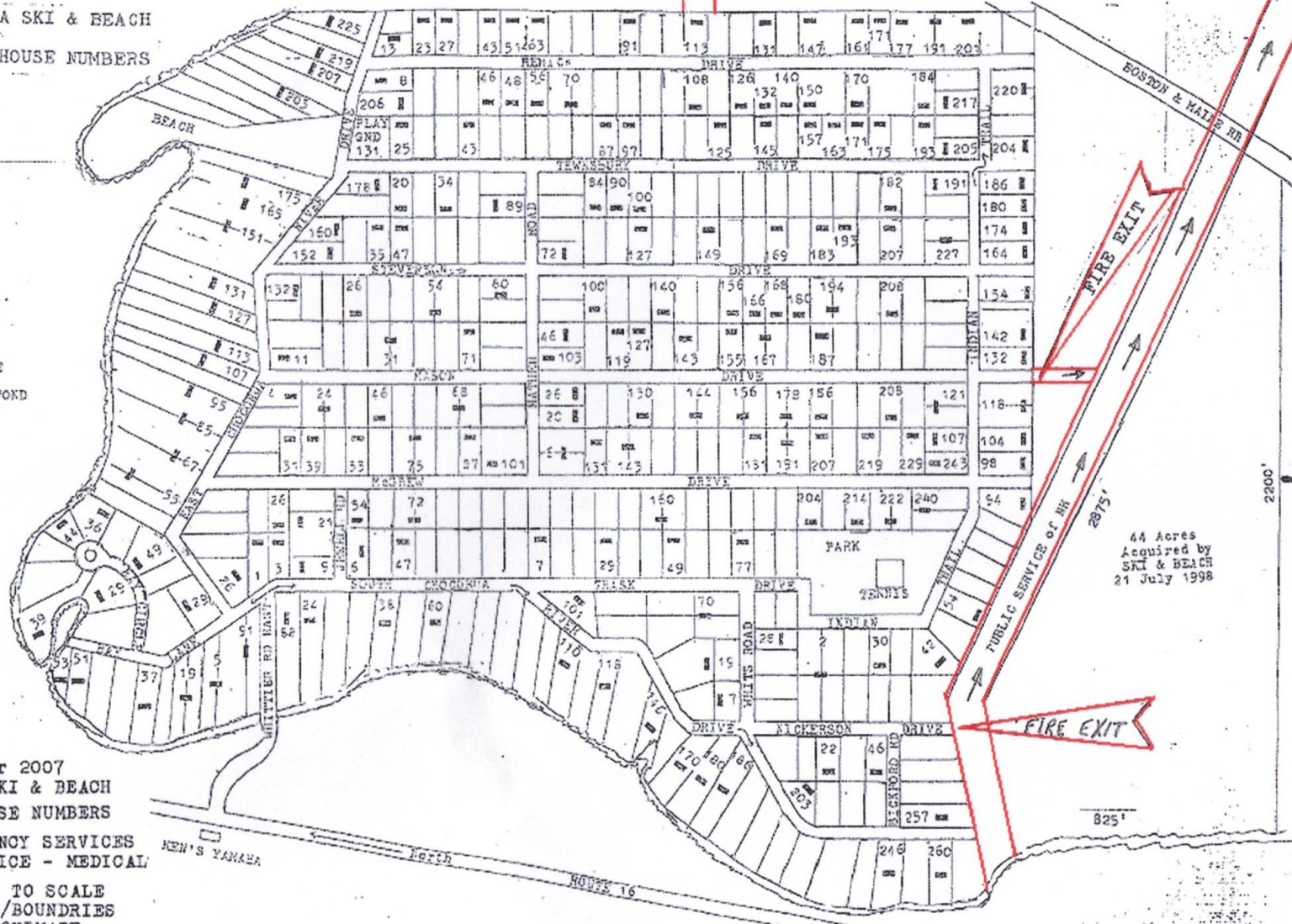


EXIT TO CARVE AND
BARK ASSOCIATION

CHOCORUA SKI & BEACH
9 1 1 HOUSE NUMBERS

MOORE
POND



44 Acres
Acquired by
SKI & BEACH
21 July 1998

October 2007
CHOCORUA SKI & BEACH
"911" HOUSE NUMBERS
FOR EMERGENCY SERVICES
FIRE - POLICE - MEDICAL
MAP NOT TO SCALE
LOT LINES/BOUNDRIES
APPROXIMATE